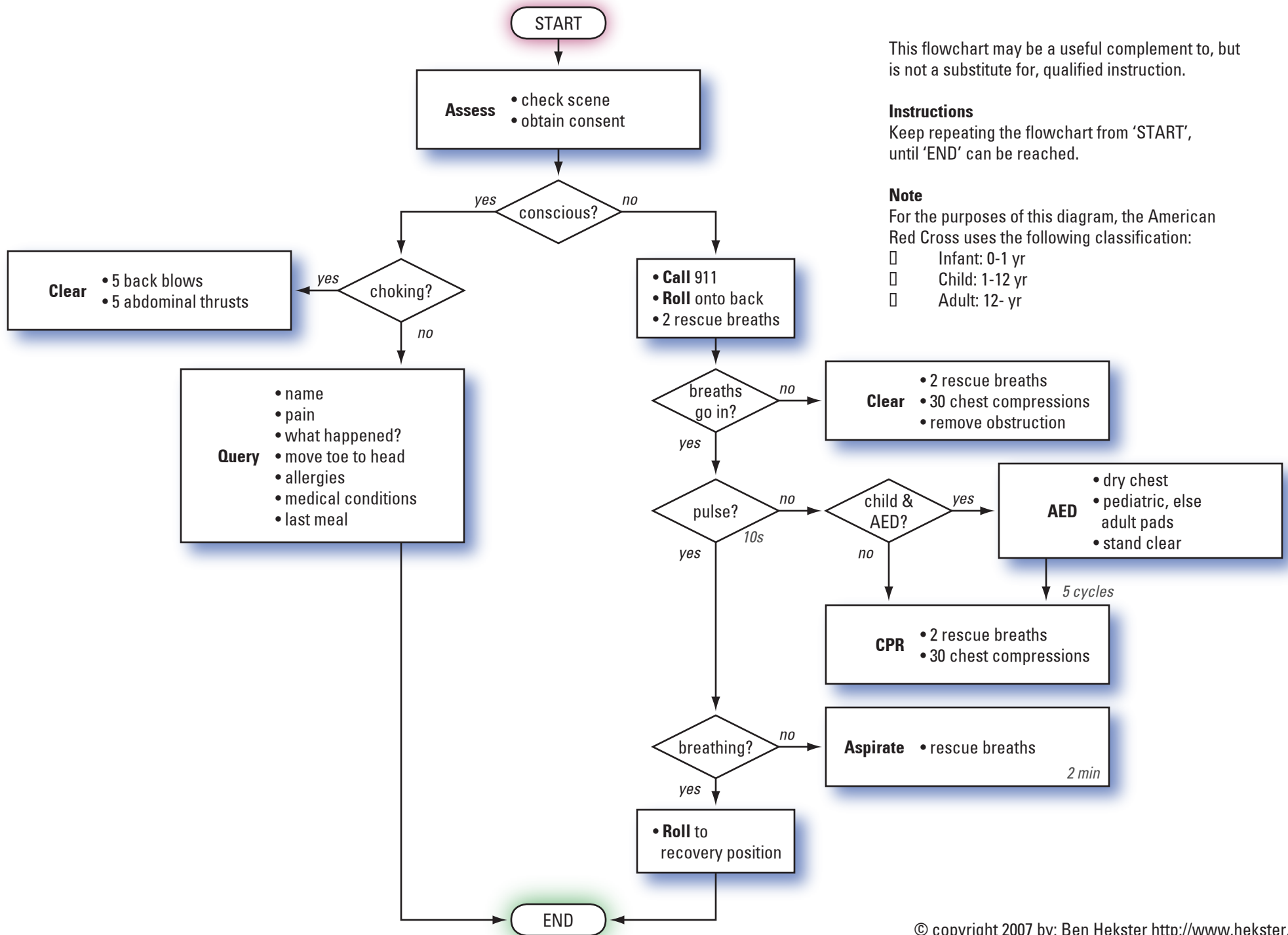


Infant and Child CPR Flowchart



This flowchart may be a useful complement to, but is not a substitute for, qualified instruction.

Instructions

Keep repeating the flowchart from 'START', until 'END' can be reached.

Note

For the purposes of this diagram, the American Red Cross uses the following classification:

- ☐ Infant: 0-1 yr
- ☐ Child: 1-12 yr
- ☐ Adult: 12- yr